

SongSpace at First Unitarian: a celebration of folk, old-time, bluegrass, singer-songwriter and world music, featuring local, regional and national artists. We are dedicated to establishing a welcoming and meaningful space both for making and listening to quality music. Shows are open to the public and will take place in a friendly, informal setting where music lovers can enjoy light refreshments.



SongSpace is located in the Undercroft Gallery of the First Unitarian Church of Pittsburgh, 605 Morewood Avenue, Pittsburgh, PA 15213. Our venue is smoke-free and wheelchair accessible; on-street parking is available.

SUGGESTED DONATION:

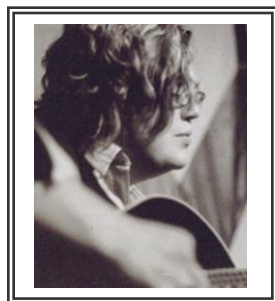
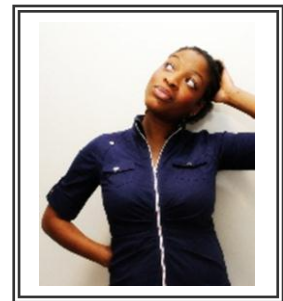
\$15 general admission | \$10 student

Our shows start at 7:30 p.m. and doors open 30 minutes before show time. Email us at songspace.firstuu@yahoo.com for information on advance tickets.

OUR 2012 SEASON FEATURES:

SATURDAY, JANUARY 14: JOY IKE & JUDITH AVERS

Joy Ike is a perennial fan favorite whose music is noted for its lyrical depth, addressing the human condition, thoughts on love, and the search for God in a very tangible way. Ike recently performed on the Lilith Fair Tour and was featured on NPR's *All Things Considered*.



Recent Pittsburgh transplant Judith Avers refined her Americana-style music while living in West Virginia and Colorado, writing songs that have been referred to as melodic folk lullabies. Avers' haunting melodies and evocative voice captivate her listeners.

SATURDAY, MARCH 24: ERNIE HAWKINS

Ernie Hawkins, an internationally renowned acoustic guitar virtuoso, plays and sings blues, ragtime, and gospel. His riveting music springs mostly from the early 1900s east coast Piedmont and Texas steel-string flattop fingerpicking styles. Hawkins captivates his audiences by infusing his articulate and dynamic personal style while communicating the tradition of this beautiful and complex music.



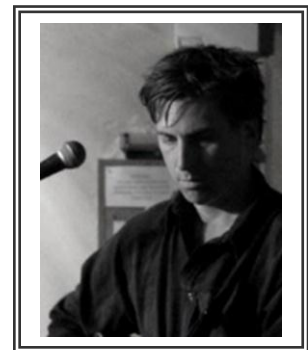
SATURDAY, MAY 12: CINDY KALLET & GREY LARSEN



Cindy Kallet's passion for folk tradition is deeply personal, from her intricate guitar playing to her heartfelt singing to her honest and intelligent songwriting to her quietly outrageous humor. Regarded as one of America's leading Irish flute players, Grey Larsen is at home in several musical styles, including the old-time fiddle music of the northern Appalachian cultural region.

SATURDAY, SEPTEMBER 29: JOE CROOKSTON

Joe Crookston's folk music is rooted in the grand celebration of life. His keen musicianship as guitarist, clawhammer banjo player, fiddler, singer and songwriter fuse contemporary and traditional styles; his audience rapport and playful stage presence is intense, mesmerizing and refreshingly dynamic.



SATURDAY, NOVEMBER 17: BRAD LEFTWICH & LINDA HIGGINBOTHAM



Brad Leftwich is widely recognized as one of the foremost old-time fiddlers in the United States, his music a direct link to the traditions of the southern Appalachian and Ozark mountains. Wife and longtime musical partner Linda Higginbotham, fellow member of the Hogwire String Band, joins Leftwich on banjo.

Like SongSpace at First Unitarian on Facebook and follow us on Twitter.

Sign up for our email list on our website, www.uusongspace.com, to receive announcements of upcoming events.

INFORMATION FOR ARTISTS:

We book our shows 6-12 months in advance. For consideration by our committee, please contact us at songspace.firstuu@yahoo.com for specific booking instructions. We'd love to hear from you!